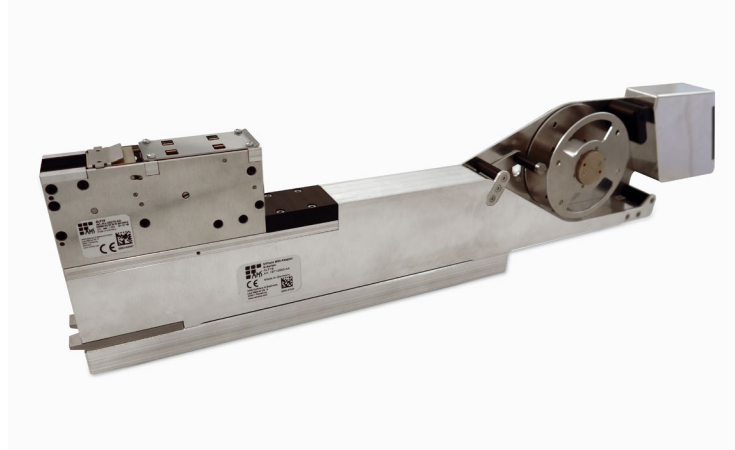


## Expanding the Automated Label Feeder range with the ALF19-XS

Meet the newest member of the ALF (Automated Label Feeder) range! The ALF19-XS Label Feeder automatically feeds preprinted labels to a pcb (printed circuit board) component pick & place machine in a fast, efficient, reliable and easy way at an affordable price. The ALF19-XS has a minimal footprint, remote control and fast operation.

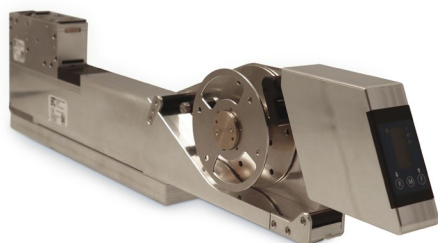


The ALF19-XS is typically used as central part in traceability solutions. It can be integrated in machines that place components on assemblies. In electronic manufacturing they allow a robust process applying uniquely serialised labels to products for traceability purposes, specifically where machine-readable bar code labels are used. With a full-automatic liner rewinding unit, the ALF19-XS also auto-collects empty label liners to keep the workplace clean.

### ALF19-XS Features and benefits



- Size/Width: 28mm unit width. Small footprint on SMT line, which allows for a higher variety of components to be placed. At the same time opens up 1 to 2 more slots compared to the ALF14-25.
- Smallest label: 2x2mm. Largest label: 18x18mm. Liner width: from 4 to 21mm. Designed to work with the label size needed.
- User interface: fast material changeover and quick adjustments through UI screen and three buttons on the outer end of the adapter.
- Fixed label presenting surface: labels are presented to a pad which allows for smaller labels. Eliminates the need to replace conveyor belts over time.



- Remote access via Wi-Fi: get real-time status of the Label Feeder.
- Fully automated solution: once set up, works seamlessly in conjunction with the component placement equipment.

## Target audience

With our complete range of Automated Label Feeders we aim to serve customers in the electronics market that are active in pcb manufacturing, use SMT lines, and are looking to increase efficiency by automating their labelling process.

## Timing

The ALF19XS will be available to order from March 2021.

## Product references

These are the order references of the introduced parts:

Article number	Description	Machine compatibility
151942	ALF19-XS	Combined with adapter only
151943	ALF19 Fuji Adapter	FUJI AIMEX, AIMEX 2, AIMEX 2S, AIMEX 3/3c, NXT 1, NXT 2, NXT 3
151944	ALF19 Juki Adapter	JUKI FX-3 Speed Placer, FX-3R / FX-3RA, JM-10 Multitask Platform, JM-20 Multitask Platform, JX-100LED Compact placer, JX-300LED Compact Placer, all KE-1000 machine series, all KE-2000 Speed Placer machines, KE-3010 Speed Placer, KE-3010A, KE-3020 Flex Placer
151945	ALF19 Siplace Adapter D, F, HF, S Series	Siplace D, F, HF & S series
151946	ALF19 Siplace Adapter X and e-by Series	Siplace X & E-by series

The references will be added to Product Discount Group AI (AIDC).

## Label Feeder range benefits

With the ALF19-XS added, this brings our current range of Label Feeders offer to:

- **ALF19-XS**: max label width is 18mm
- **ALF14-25**: max label width is 23mm
- **ALF14-40**: max label width is 40mm
- **ALF14-55**: max label width is 55mm

Our Label Feeder models help solve these challenges for production engineers:

- Increase production efficiency to save money (automation).
- Reduce Scrap/Waste/rework - Automation removes the risk of human error. Poke-Yoke or Lean practices dictate that this can be done via automated processes.
- Increase labelling accuracy - some labels (e.g. 5 x 5mm) are virtually impossible to accurately label in any volume by hand.
- Affordable traceability - The feeder range is the most economic & efficient option to comply with traceability requirements that are being driven down the supply chain in many industries.

With the addition of the ALF19-XS model to the existing range of Label Feeder models, we can support virtually any customer in need of increased output and quality control by automating pcb labelling in an accurate, reliable and affordable way.

Do not forget, combined with our BradyPrinter i7100 Industrial Label Printer and dedicated label materials such as B-7727 polyimide self-adhesive label stock and B-7634 polyimide transparent masking material, we have the complete solution available!

### **Please reach out to your Brady representative for more information**

DYNAMIC Systems GmbH  
Inninger Straße 11  
82237 Wörthsee  
Tel.: +49 8153/9096-0  
[info@dynamic-systems.de](mailto:info@dynamic-systems.de)  
[www.dynamic-systems.de](http://www.dynamic-systems.de)